



SAMYOUNG MACHINERY CO., LTD.

Home About Products Facility Technology Service Contact



SAMYOUNG CI

SAMYOUNG'S C.I. REPRESENT OUR INNOVATIVE SPIRITS

SAMYOUNG LOGO



Samyoung's symbol is composed of three circles crossing in the center and one circumferential line around them. Each circle represents metal, machine and design respectively which are key capabilities of Samyoung. Circumferential line around three circles expresses strong bond among the elements to achieve quick adaptation to market changes.

SYMBOL MARK COLOR



RED
M : 100%, Y : 100%
PANTONE

Red color of symbol which came from metallic melt represents that Samyoung's comparative advantage is based on world-best casting technology.

LOGO TYPE COLOR



BLACK
BL : 100%
PANTONE

SIGNATURE



[Home](#) | [About](#) | [Products](#) | [Facility](#) | [Technology](#) | [Service](#) | [Contact](#)

440, Wolmi-dong, Gongju, Chungnam, Korea. TEL: +82 41 840 3000 FAX: +82 41 840 3002
EMAIL: sales@samyoungmachinery.com info@samyoungmachinery.com

© Samyoung Machinery Co., Ltd. All rights reserved.



SAMYOUNG MACHINERY CO., LTD.

Home

About

Products

Facility

Technology

Service

Contact



Company History

1975 ~ 2009

Samyoung provides the best products to customers by following exhaustive quality control standards and utilizing on-going technical development. Samyoung's products are quality approved by DNV, LR, BV, NK, KR, EM and ISO 9001. Samyoung welcomes inquiries regarding any type of casting products and orders in any quality.

- 1975 Established Samyoung Machinery Industrial Co.
- 1977 Registered the utility model patent for Water Jacket of Cylinder Liner (Pat. No. 14911)
- 1980 Appointed as manufacturer of developing Diesel Locomotive Engine Parts by the Ministry of Trade, Industry and Energy, Korea
- 1982 Certified as an approved factory by KR (Korean Register of Shipping)
- 1983 Appointed as a special research company by the Ministry of Science and Technology
- 1984 Awarded the Presidential Prize of domestic development and quality enhancement
- 1986 Technical collaboration with Riken Corp. Japan
- 1989 Awarded the Daejeon Citizen Prize for industrial development
- 1990 Certified as an approved factory by DNV (Det Norske Veritas)
- 1992 Certified as an approved factory by LR (Lloyd's Register of Shipping)

Awarded the Domestic Development Merit by (HHI) Hyundai Heavy Industrial Co., Ltd.

- 1993 Converted to Samyoung Machinery Co., Ltd.

Awarded the New Korean prize by the President of Korea

- 1995 Received the Haebong Prize for Casting and Forging
- 1996 Acquired ISO 9002 Certification
- 1997 Awarded the Stone Industrial medal by the President of Korea
- 1999 Acquired EM Certification by the Agency for Technology and Standards, Ministry of Commerce, Industry and Energy, Korea
- 2000 Acquired ISO 9001 Certification.

Joined the Railway Supply Institute (RSI), USA

- 2003 Certified as an approved factory by B.V (Bureau Veritas)
- 2004 Certified as an approved factory by N.K (Nippon Kaiji Kyokai)
- 2006 Certified as an INNO-BIZ company by Korean SMBA (Small and Medium Business Administration)
- 2008 Received the Management Award by Korea Academic Society of Accounting
- 2009 Certified as an Venture Company by KIBO Technology Fund.

Korean World-Class Product Award for pistons of medium-speed marine diesel engines.

[Home](#) | [About](#) | [Products](#) | [Facility](#) | [Technology](#) | [Service](#) | [Contact](#)

440, Wolmi-dong, Gongju, Chungnam, Korea. TEL: +82 41 840 3000 FAX: +82 41 840 3002
EMAIL: sales@samyoungmachinery.com info@samyoungmachinery.com

© Samyoung Machinery Co., Ltd. All rights reserved.



SAMYOUNG MACHINERY CO., LTD.

[Home](#)

[About](#)

[Products](#)

[Facility](#)

[Technology](#)

[Service](#)

[Contact](#)

DIESEL INNOVATION

SAMYOUNG

world-leading company for high-performance
and environment-friendly diesel engines.



Samyoung Machinery Co., Ltd. is a world leading manufacturing company in the locomotive and marine diesel engine industry located in Korea. We specialize in manufacturing Pistons, Cylinder Head, Cylinder Liner, piston Rings, Connecting Rod, Valves, Piston Pin, Pinion Gear, Power Pack Assembly, Engine Block, Front-End Box, After-End Box, Diesel Engine Manufacturing, Engine Re-manufacturing, Castings, Robotic welding system, Etc. [Available brands](#) includes: EMD, ALCO, MTU, PIELSTICK, NIIGATA, MAN B&W, HIMSSEN.

Over 30 years of experience and lots of accumulated knowledge in the industry enables Samyoung to have world highest productivity and price competitiveness, accompanied by high performance and environment friendliness. Samyoung's [customers](#) are all around the world including top-ranking international and domestic companies such as, Hyundai Heavy Industries Co., Ltd., STX Enpaco and KORAIL, Etc.

One of Samyoung's key characteristics is extensive vertical integration. Samyoung has all the major processes in house to manufacture diesel engine parts and engine assembly, for instance, design, analysis, casting, machining, assembly and quality control. This vertical integration is very rare in the diesel industry and gives Samyoung an easy access to accomplish performance improvement, environmental issues and lower price in a relative short period of time.

Vision: "Diesel Innovation"

It has been more than 100 years since German engineer Rudolf Diesel invented diesel engine for the first time in 1893. Even though there were numerous improvements in diesel engines during the last century, Samyoung is willing to make another innovation with its own technology in this field.

Development of high-powered, environment-friendly and price competitive diesel engines is the ultimate goal of Samyoung Machinery Co., Ltd.

Vertical Integration

In terms of diesel engines, Samyoung is vertically-integrated company to a very large extent. From initial design to final products, every manufacturing step is executed within Samyoung, including analysis, casting, machining, testing, quality control etc.

This extensive vertical integration results in Samyoung's competitive advantage, impacting positively on lead-time, easy quality control over the entire manufacturing processes and more customer satisfaction.



[Home](#) | [About](#) | [Products](#) | [Facility](#) | [Technology](#) | [Service](#) | [Contact](#)

440, Wolmi-dong, Gongju, Chungnam, Korea. TEL: +82 41 840 3000 FAX: +82 41 840 3002
EMAIL: sales@samyoungmachinery.com info@samyoungmachinery.com

© Samyoung Machinery Co., Ltd. All rights reserved.



SAMYOUNG MACHINERY CO., LTD.

[Home](#) | [About](#) | [Products](#) | [Facility](#) | [Technology](#) | [Service](#) | [Contact](#)



1st Factory



Small to medium-size parts machining

- Small to medium-size parts machining such as cylinder head, cylinder liner, pistons, etc.
- Piston ring (OA KEEPER Ring) manufacturing line
- Piston pin manufacturing line
- Main Office



Facility

- [1st Factory](#)
- [2nd factory](#)
- [samyoung GTM](#)
- [green powertek](#)
- [samyoung company](#)
- [catalogue](#)
- [contact us](#)

[Home](#) | [About](#) | [Products](#) | [Facility](#) | [Technology](#) | [Service](#) | [Contact](#)

440, Wolmi-dong, Gongju, Chungnam, Korea. TEL: +82 41 840 3000 FAX: +82 41 840 3002
 EMAIL: sales@samyoungmachinery.com info@samyoungmachinery.com

© Samyoung Machinery Co., Ltd. All rights reserved.



SAMYOUNG MACHINERY CO., LTD.

Home About Products Facility Technology Service Contact



2nd Factory Facility



Small to medium-size parts machining

- Small to medium-size parts machining such as cylinder head, cylinder liner, piston. etc.
- In-house research and development labs.



Facility

- 1st Factory
- 2nd factory
- samyoung GTM
- green powertek
- samyoung company
- catalogue
- contact us

[Home](#) | [About](#) | [Products](#) | [Facility](#) | [Technology](#) | [Service](#) | [Contact](#)

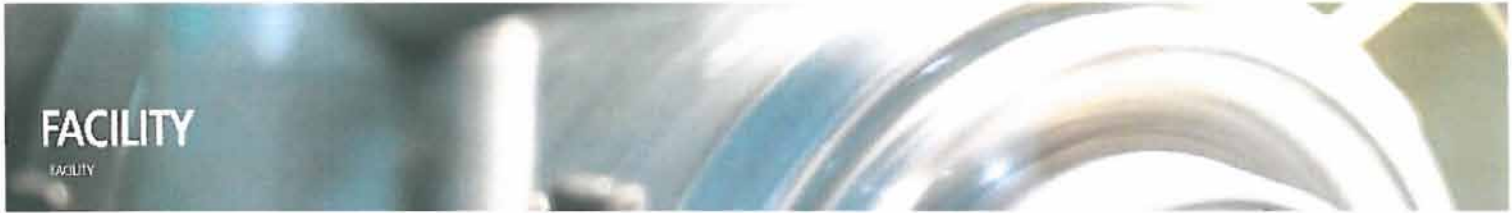
440, Wolmi-dong, Gongju, Chungnam, Korea. TEL: +82 41 840 3000 FAX: +82 41 840 3002
EMAIL: salr@samyoungmachinery.com info@samyoungmachinery.com

© Samyoung Machinery Co., Ltd. All rights reserved.



SAMYOUNG MACHINERY CO., LTD.

Home About Products Facility Technology Service Contact



FACILITY

SAMYOUNG GTM



Small to large-size Casting line



Facility

- 1st Factory
- 2nd factory
- samyong GTM
- green powertek
- samyong company
- catalogue
- contact us

[Home](#) | [About](#) | [Products](#) | [Facility](#) | [Technology](#) | [Service](#) | [Contact](#)

440, Wolmi-dong, Gongju, Chungnam, Korea. TEL: +82 41 840 3000 FAX: +82 41 840 3002
EMAIL: sales@samyongmachinery.com info@samyongmachinery.com

© Samyoung Machinery Co., Ltd. All rights reserved.



SAMYOUNG MACHINERY CO., LTD.

[Home](#) [About](#) [Products](#) [Facility](#) [Technology](#) [Service](#) [Contact](#)



SAMYOUNG TECHNOLOGY

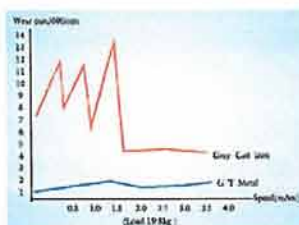
GT-METAL[®]

New Material Development Samyoung GT Metal[®]

A world leader in the production of high quality cast iron products such as ductile cast iron, vermicular cast iron, alloyed cast iron and gray cast iron.

Mechanical Characteristics

- Two or three times more durable than gray cast iron.
- Economical due to greater longevity.
- Prevents output power loss through improved anti-erosion and anti-defacement.
- Reduces lube oil consumption by preventing the escape of exhaust gas.
- Reduces frequency of repair for marine engines and provides more opportunities for maintenance during off-duty times.



SDI[®]-800

SDI(Samyoung Ductile Cast Iron)-800 is high-strength, high-elongation ductile cast iron developed by Samyoung utilizing over 30 years of experience in casting industry. Currently, SDI-800 is widely used in variety of products such as pistons. Due to its excellent mechanical properties and price-competitiveness, demands for SDI-800 are growing very fast in the market.

(Mechanical Properties)

Tensile Strength	Over 800 MPa
Elongation	Over 5%

Technology

[Samyoung Technology certification](#)
[research lab](#)
[samyoung company catalogue](#)
[contact us](#)

OA KEEPER® RING SET

Samyoung's patent OA Keeper Ring set guarantees you better engine performance satisfying environmental issues.



Piston Rings

Samyoung's OA Keeper® Rings feature

- Environment friendly
- Drastic reduction in smoke
- Less oil consumption
- Eliminated oil souping
- Remarkably decreased blow-by

PISTON RING	MODEL
EMD	645E3, 567C
HIMSEN	H21/32, H25/33

EMD645E3 ENGINE TEST RESULTS

RPM	SMOKE(UNIT:SMOKE SCALE NO.)		CO(UNIT:PPM)	
	OA KEEPER RING SET	ORDINARY RING SET	OA KEEPER RING SET	ORDINARY RING SET
255	1	1	57	116
315	1	1	41	83
365	2.5	3	16	58
492	2.5	3	0	33
565	3	4	0	34
650	3	4.5	0	49
730	3	5	22	65
830	3	5.5	136	247

(SOURCE: KOREA INSTITUTE OF MACHINERY AND MATERIALS)

LASER BEAM HARDENED CYLINDER LINER

- Prolongs the life of cylinder liners.
- Prevents heavy metal pollution.
- Enhances engine output by producing optimum operating conditions.
- Compatible with FC or Cr-plated rings.
- Reduces oil consumption.



[Home](#) | [About](#) | [Products](#) | [Facility](#) | [Technology](#) | [Service](#) | [Contact](#)

440, Wolmi-dong, Gongju, Chungnam, Korea TEL: +82 41 840 3000 FAX: +82 41 840 3002
 EMAIL: sales@samyoungmachinery.com, info@samyoungmachinery.com

© Samyoung Machinery Co., Ltd. All rights reserved.



SAMYOUNG MACHINERY CO., LTD.

[Home](#) [About](#) [Products](#) [Facility](#) [Technology](#) [Service](#) [Contact](#)



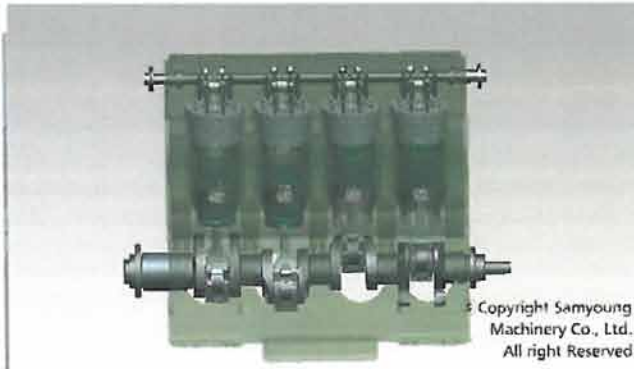
Research Lab

SAMYOUNG RESEARCH LAB

CAD

Computer Aided Design

Samyoung uses Pro/ENGINEER, high-end full 3D modeler, for design of all products. Using high-end modeler enables Samyoung to shorten overall period of new product development. In addition, 3D models generated by Pro/ENGINEER are widely used for following development steps such as CAM and CAE.



CAE

Computer Aided Engineering

To minimize overall leadtime and expense of development, CAE is a very powerful and indispensable tool nowadays. Samyoung is extensively using various kinds of FEM(Finite Element Method) analysis in the process of development to make sure high quality and low cost.

- Structural and thermal Analysis
- Computational Fluid Dynamics
- Casting Optimization
- Multi Body Dynamic Analysis

Technology

- [Samyoung Technology](#)
- [certification](#)
- [research lab](#)
- [samyoung company](#)
- [catalogue](#)
- [contact us](#)



CAM

Computer Aided Manufacturing

Over 90% of products of Samyoung is manufactured using NC or CNC machining systems. To minimize lead time for NC code generation Samyoung is using latest 3D CAM system. Especially in terms of multi-axis machining system like plano-miller, CAM makes NC code easier to generate and more optimized for high productivity.



PISTON-CAM

[Home](#) | [About](#) | [Products](#) | [Facility](#) | [Technology](#) | [Service](#) | [Contact](#)

440, Wolmi-dong, Gongju, Chungnam, Korea. TEL: +82 41 840 3000 FAX: +82 41 840 3002
EMAIL: sales@samyoungmachinery.com info@samyoungmachinery.com

© Samyoung Machinery Co., Ltd. All rights reserved.



SAMYOUNG MACHINERY CO., LTD.

[Home](#) | [About](#) | [Products](#) | [Facility](#) | [Technology](#) | [Service](#) | [Contact](#)



Notice

Samyoung's Latest News

- 1. [Global Railway Tech 2006](#)
- 2. [9th VJC User-Producer Interaction Conference](#)
- 3. [Marine Tech Korea 2006](#)
- 4. [Samyoung won 2009 Korean World-Class Product Award from Korean government](#)

Service

- [samyoung's latest news](#)
- [downloads](#)
- [contact us](#)

[Home](#) | [About](#) | [Products](#) | [Facility](#) | [Technology](#) | [Service](#) | [Contact](#)

440, Wolmi-dong, Gongju, Chungnam, Korea. TEL: +82 41 840 3000 FAX: +82 41 840 3002
EMAIL: sales@samyoungmachinery.com info@samyoungmachinery.com

© Samyoung Machinery Co., Ltd. All rights reserved.



SAMYOUNG MACHINERY CO., LTD.

[Home](#) [About](#) [Products](#) [Facillty](#) [Technology](#) [Service](#) [Contact](#)



Certification

Samyoung's Certifications & Approvals

Technology

- [Samyoung Technology](#)
- [certification](#)
- [research lab](#)
- [samyoung company](#)
- [catalogue](#)
- [contact us](#)





SAMYOUNG MACHINERY CO., LTD.

[Home](#) [About](#) [Products](#) [Facility](#) [Technology](#) [Service](#) [Contact](#)



Contact Information

Samyoung Machinery Co., Ltd.

Head Office & New Factory

440, Wolmi-dong, Gongju, Chungnam, Korea.
TEL: +82 41 840 3000
FAX: +82 41 840 3002
EMAIL: sales@samyoungmachinery.com
info@samyoungmachinery.com

40-58 Daewha-Dong, Daeduk-Gu, Daejeon, Korea.
(1st Factory) Tel: +82-42-625-4064 Fax: +82-42-623-4855

2nd Factory

290-39 Daewha-Dong, Daeduk-Gu, Daejeon, Korea.
Tel: +82-42-625-6933

3rd & 4th Factory

483-6 Yachon-Ri, Gayagok-Myun, Nonsan, Korea.
Tel: +82-41-741-4235 Fax: +82-41-741-4197

Inquiry Form

Name

Email

Message

Submit

[Home](#) | [About](#) | [Products](#) | [Facility](#) | [Technology](#) | [Service](#) | [Contact](#)

440, Wolmi-dong, Gongju, Chungnam, Korea. TEL: +82 41 840 3000 FAX: +82 41 840 3002
EMAIL: sales@samyoungmachinery.com, info@samyoungmachinery.com

© Samyoung Machinery Co., Ltd. All rights reserved.



SAMYOUNG MACHINERY CO., LTD.

- Home
- About
- Products
- Facility
- Technology
- Service
- Contact

LOCOMOTIVE ENGINE PARTS

Samyoung's products are durable, reliable and competitively priced.



- CYLINDER HEAD
- CYLINDER LINER
- PISTON & CARRIER
- PISTON RING
- CONNECTING ROD
- VALVE
- PISTON PIN
- PIN

Locomotive Engine Parts

CYLINDER HEAD



EMD

A long stretch of Samyoung's EMD cylinder heads manufacturing made its cylinder heads perfect and reliable than ever before.

MODEL & ENGINE TYPE	MATERIAL		
	KS	JIS	DIN
EMD 645E31F3C, 567C, 710	GC	FC	GG



ALCO

Samyoung Alco cylinder heads are built to last long.

MODEL & ENGINE TYPE	MATERIAL		
	KS	JIS	DIN
ALCO251 Plus	GC	FC	GG



MTU

MTU cylinder heads are no exception to Samyoung's high quality and performance.

MODEL & ENGINE TYPE	MATERIAL		
	KS	JIS	DIN
MTU 396	GCD	FCD	GGG



PIELSTICK

Samyoung Pielstick cylinder heads are built to last long.

MODEL & ENGINE TYPE	MATERIAL		
	KS	JIS	DIN
PIELSTICK PA4V 185	GC	FC	GG

CYLINDER LINER



EMD

Samyoung EMD cylinder liners are world famous due to its unique design and durability. Both laser hardening and chrome plating are available.

MODEL & ENGINE TYPE	MATERIAL		
	KS	JIS	DIN
EMD 645E/E3/E3C, 567C, 710	GC	FC	GG



ALCO

Manufactured by sand casting, Samyoung cylinder liners have more wear-resistance, longer life expectancy and less emission.

MODEL & ENGINE TYPE	MATERIAL		
	KS	JIS	DIN
ALCO 251	GC	FC	GG



MTU

Manufactured by sand casting, Samyoung cylinder liners have more wear-resistance, longer life expectancy and less emission.

MODEL & ENGINE TYPE	MATERIAL		
	KS	JIS	DIN
396	GC	FC	GG



PIELSTICK

Manufactured by sand casting, Samyoung cylinder liners have more wear-resistance, longer life expectancy and less emission.

MODEL & ENGINE TYPE	MATERIAL		
	KS	JIS	DIN
PIELSTICK PA4V 185	GC	FC	GG

PISTON & CARRIER



EMD

Since 1978, Samyoung has manufactured tens of thousands of EMD pistons without a defect for them. Due to our long history in piston making, Samyoung is well known for a piston expert worldwide.

MODEL & ENGINE TYPE	MATERIAL		
	KS	JIS	DIN
645E/E3/E3B, 567C, 710	GC	FC	GG



MTU

The performance of Samyoung MTU pistons is market-proven satisfying our customers.

MODEL & ENGINE TYPE	MATERIAL		
	KS	JIS	DIN
MTU 396		JIS SCM440	
		ASTM A4032 F	

PIELSTICK

It has been nearly 20 years for Samyoung to produce Pielstick pistons. It is not difficult to find a customer claiming great reliability of Samyoung Pielstick pistons.



MODEL & ENGINE TYPE	MATERIAL		
	KS	JIS	DIN
PIELSTICK PA4V 185	GCD	FCD	GGG

PISTON RING



EMD

Samyoung patent OA Keeper ring set is a remarkably effective solution for both performance improvement and environment issues.

PISTON RING	EMD
MODEL	645E3, 567C

CONNECTING ROD



EMD

Accompanying with Power Pack assembly, Samyoung connecting rods have solid reliability

MODEL & ENGINE TYPE	MATERIAL		
	KS	JIS	DIN
EMD 645E	GC	FC	GG

VALVE



EMD

Samyoung valves are durable, reliable and competitively priced.

VALVES	EMD, MTU, ALCO, NIIGATA
--------	-------------------------

PISTON PIN



EMD, PIELSTICK

Manufactured by latest CNC systems, Samyoung piston pins are precise and reliable.

EMD	645E/E3
PIELSTICK	PA4V 185

PISTON GEAR



PINION GEAR

Samyoung pinion gears are robust and durable.

GEARS | PINION 15T, 17T, 20T for EMD

POWER PACK ASSEMBLY



POWER PACK ASSEMBLY

Power pack assembly is composed of Samyoung genuine premium power parts such as cylinder heads, cylinder liners and pistons.

- | | | | |
|----------------------|-------------------------|--------------------------|---------------------|
| 1. Cylinder Liner | 7. Exhaust Valve Spring | 13. Liner To Head Nut | 18. Snap Ring |
| 2. Piston | 8. Lock Half | 14. Liner To Head Washer | 19. Carrier |
| 3. Cylinder Head | 9. Head Gasket Kit | 15. Rod Assy(Fork) | 20. Piston Pin Bolt |
| 4. Piston Pin | 10. Ring Seat | 16. Rod Assy(Blade) | 21. Bolt Kit |
| 5. Valve | 11. Ring Set | 17. Thrust Washer | 22. Gasket Kit |
| 6. Valve Spring Seat | 12. Insert Bearing | | |

[Home](#) | [About](#) | [Products](#) | [Facility](#) | [Technology](#) | [Service](#) | [Contact](#)

440, Wolmi-dong, Gongju, Chungnam, Korea. TEL: +82 41 840 3000 FAX: +82 41 840 3002
EMAIL: sales@samyoungmachinery.com info@samyoungmachinery.com

© Samyoung Machinery Co., Ltd. All rights reserved.



SAMYOUNG MACHINERY CO., LTD.

[Home](#) [About](#) [Products](#) [Facility](#) [Technology](#) [Service](#) [Contact](#)

MARINE ENGINE PARTS

Samyoung's superior quality, high-tech marine engine parts.

[CYLINDER HEAD](#)

[CYLINDER LINER](#)

[PISTON](#)

[PISTON RINGS](#)

[ENGINE BLOCK](#)

[FRONT-END](#)

Marine Engine Parts

CYLINDER HEAD



MAN

Quality, reliability and delivery are three major characteristics of Samyoung cylinder heads.

HEAD	MAN
MODEL	L23/30, L21/31, L28/32, L27/38, L32/40



HIMSSEN

Samyoung HIMSSEN cylinder heads are being used world-wide for both maritime and stationary power uses

HEAD	HIMSSEN
MODEL	H17/28, H21/32, H25/33, H32/40



PIELSTICK

Samyoung Pielstick cylinder heads are built to last long.

HEAD	PIELSTICK
MODEL	PA4V 185



EMD

A long stretch of Samyoung's EMD cylinder heads manufacturing made its cylinder heads perfect and reliable than ever

HEAD	EMD
MODEL	645E/E3/F3C, 567, 710



MTU

MTU cylinder heads are no exception to Samyoung's high quality and performance.

HEAD	MTU
MODEL	MTU396

CYLINDER LINER



MAN

Manufactured by sand casting, Samyoung cylinder liners have more wear-resistance, longer life expectancy and less emission.

LINER	MAN
MODEL	L23193, L28192, 50MC-C, 60MC-C, 70MC-C



HIMSSEN

Manufactured by sand casting, Samyoung HIMSSEN cylinder liners have more wear-resistance, longer life expectancy and less emission.

LINER	HIMSSEN
MODEL	H17124, H17128



EMD

Samyoung EMD cylinder liners are world famous due to its unique design and durability. Both laser hardening and chrome plating are available.

LINER	EMD
MODEL	EMD 645E/E3/E3C, 567C, 710



MTU

Manufactured by sand casting, Samyoung cylinder liners have more wear-resistance, longer life expectancy and less emission.

LINER	MTU
MODEL	MTU396



PIELSTICK

Manufactured by sand casting, Samyoung cylinder liners have more wear-resistance, longer life expectancy and less emission.

MODEL & ENGINE TYPE	MATERIAL		
	KS	JIS	DIN
PIELSTICK PA4V 185	GC	FC	GG



MAN

Cylinder Liner for low speed diesel engines

LINER	MAN
MODEL	550MC-C, 560MC-C, 570MC-C

PISTON



HIMSSEN

HIMSSEN pistons are manufactured utilizing the latest technology and Samyoung's 36 years of piston making experiences, resulting in a surpassing performance.

PISTON	HIMSSEN
MODEL	H21/32, H25/33



MAN

Samyoung pistons for MAN engines have improved structural and thermal performance. Tens of thousands of pistons for MAN engines are being used with great customer satisfaction.

HEAD	MAN
MODEL	H23/30, H21/31, H28/32, L27/38, L32/40



EMD

A long stretch of Samyoung's EMD cylinder heads manufacturing made its cylinder heads perfect and reliable than ever before.

PISTON	EMD
MODEL	645E, 567C, 71D



MTU

The performance of Samyoung MTU pistons is market-proven satisfying our customers.

MODEL & ENGINE TYPE	MATERIAL		
	KS	JIS	DIN
MTU 396	JIS SCM440		
	ASTM A4032 F		



PIELSTICK

It has been nearly 20 years for Samyoung to produce Pielstick pistons. It is not difficult to find a customer claiming great reliability of Samyoung Pielstick pistons.

MODEL & ENGINE TYPE	MATERIAL		
	KS	JIS	DIN
PIELSTICK PA4V 185	GCD	FCD	GCG

PISTON RING



HIMSEN

Samyoung guarantees better performance and less emission with Samyoung's unique OA Keeper ring set for HIMSEN engines.

PISTON RING	HIMSEN
MODEL	H21/32, H25/33

EMD

Samyoung patent OA Keeper ring set is a remarkably effective solution for both performance improvement and environment issues.



PISTON RING	EMD
MODEL	645E3, 567C

ENGINE BLOCK



Samyoung Engine Block guarantees superior and stable quality with the latest casting technology and process equipment(Plano Miller)

MAN	L16/24(SL-9L), L23/30(SL-9L)
	L21/31(SL-9L), L27/38(SL-9L)
	L28/32(SL-9L), L32/40(SL-7L)
HIMSEN	H17/24(SH-9H), H17/28(SH-9H)
	H21/32(SH-9H), H25/33(SH-9H)
	H32/40(SH-7H)



FRONT END BOX

By casting technology and experience over 30 years. Samyoung is confident of high quality Front End Box which is difficult to manufacture due to the complicated structure

MAN	L16/24, L21/31, L27/38
HIMSEN	H17/24, H17/28, H21/32, H25/33



AFTER END BOX

By casting technology and experience over 30 years. Samyoung is confident of high quality After End Box which is difficult to manufacture due to the complicated structure

AFTER-END BOX	MAN
MODEL	L27/38

[Home](#) | [About](#) | [Products](#) | [Facility](#) | [Technology](#) | [Service](#) | [Contact](#)

440, Wolmi-dong, Gongju, Chungnam, Korea. TEL: +82 41 840 3000 FAX: +82 41 840 3002
EMAIL: sales@samyoungmachinery.com info@samyoungmachinery.com

© Samyoung Machinery Co., Ltd. All rights reserved.



SAMYOUNG MACHINERY CO., LTD.

[Home](#) [About](#) [Products](#) [Facility](#) [Technology](#) [Service](#) [Contact](#)

DIESEL ENGINE MANUFACTURING

Samyoung's wide experience in diesel industry,
in-house research center and testing facilities



DIESEL ENGINE MANUFACTURING

DIESEL ENGINE RE-MANUFACTURING

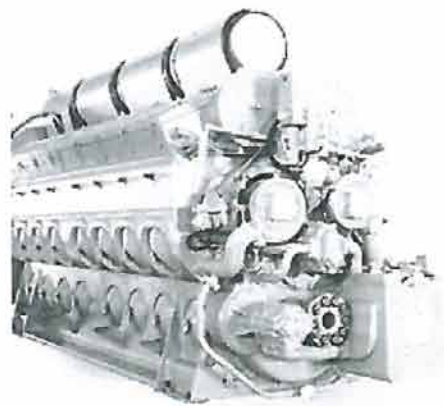
ROBOTIC WELDING SYSTEM

Engine Manufacturing



DIESEL ENGINE MANUFACTURING

Samyoung is capable of fully assembling popular diesel engines from top to bottom



DIESEL ENGINE RE-MANUFACTURING

Re-manufacturing diesel engines is available in both UTEX and OUTRIGHT terms. Samyoung re-manufactured diesel engine is as good as brand new one for the most part and even better in terms of performance and environmental issues by applying new technologies like OA Keeper ring set. By virtue of cutting-edge robotic welding system, Samyoung can re-manufacture diesel engines more easily and effectively than ever. Most of replacement parts are replaced by brand new ones, and especially in terms of key replacement parts such as cylinder heads, cylinder liners, pistons and piston rings, Samyoung genuine ones are used. Since Samyoung is equipped with all the necessary engine testing facilities like dynamometer, smoke testing equipment, dedicated engine testing area and control room, reliability and performance are guaranteed.



ROBOTIC WELDING SYSTEM

Robotic Welding System E'OS 21

Samyoung's revolutionary designed robotic welding system welds all the inner and outer surfaces of engine blocks perfectly. This CNC controlled system assures that each weld receives an equal amount of welding material

MODEL	E'OS 21
ROTOR	HR 006A
CARRIAGE	FLOOR TYPE, STROKE 3,600mm
ROBOT CONTROLLER	YA-IGCR61
WEIGHT	7,200kg
TURING MACHINE	YES
SAFETY FENCE	YES

[Home](#) | [About](#) | [Products](#) | [Facility](#) | [Technology](#) | [Service](#) | [Contact](#)

440, Wolmi-dong, Gongju, Chungnam, Korea. TEL: +82 41 840 3000 FAX: +82 41 840 3002
EMAIL: sales@samyoungmachinery.com info@samyoungmachinery.com

© Samyoung Machinery Co., Ltd. All rights reserved.

